



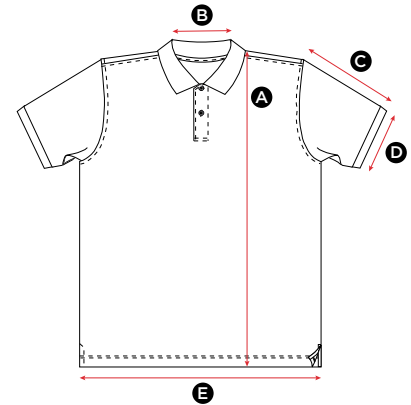
Mens Ladies Kids

SG50 Mens Cotton Polo

| MEASUREMENTS | S | M | L | XL | XXL | XXXL |
|-------------------------------|------|------|------|------|------|------|
| A Length | 70.5 | 73 | 75.5 | 78 | 80.5 | 83 |
| B Back neck opening | 17 | 17.5 | 18 | 18.5 | 19 | 19.5 |
| C Sleeve length | 23.5 | 24 | 24.5 | 25 | 25.5 | 26 |
| D Sleeve width opening | 15 | 15.5 | 16 | 16.5 | 17 | 17.5 |
| E Bottom hem opening | 50 | 53.5 | 57 | 60.5 | 64 | 67.5 |

in cm

All measurements are within industry standard tolerances and are product dependent.

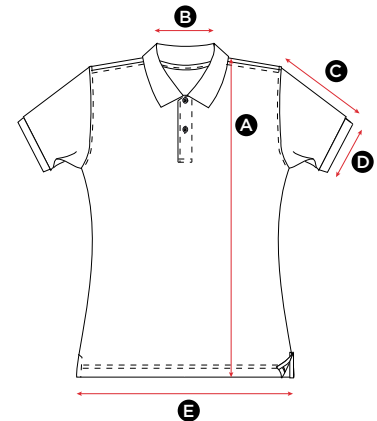


SG50F Ladies Cotton Polo

| MEASUREMENTS | XS | S | M | L | XL | XXL |
|-------------------------------|------|------|------|------|------|------|
| A Length | 58 | 60.5 | 63 | 65.5 | 68 | 70.5 |
| B Back neck opening | 16.5 | 17 | 17.5 | 18 | 18.5 | 19 |
| C Sleeve length | 15 | 16 | 17 | 18 | 19 | 20 |
| D Sleeve width opening | 11.5 | 12.5 | 13.5 | 14.5 | 15.5 | 16.5 |
| E Bottom hem opening | 45 | 48 | 51 | 54 | 57 | 60 |

in cm

All measurements are within industry standard tolerances and are product dependent.

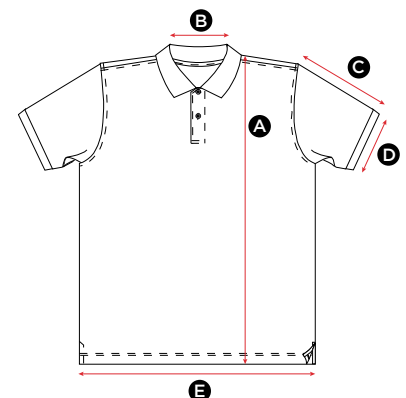


SG50K Kids Cotton Polo

| | (Years) 3-4 | 5-6 | 7-8 | 9-10 | 11-12 |
|-------------------------------|-------------|------|------|------|-------|
| MEASUREMENTS | (CM)104 | 116 | 128 | 140 | 152 |
| A Length | 46.5 | 49.5 | 52.5 | 58.5 | 66.5 |
| B Back neck opening | 13 | 13 | 14 | 14 | 15 |
| C Sleeve length | 13 | 14 | 15 | 16 | 20 |
| D Sleeve width opening | 9 | 9.5 | 10 | 10.5 | 12 |
| E Bottom hem opening | 35 | 38 | 41 | 44 | 48 |

in cm

All measurements are within industry standard tolerances and are product dependent.





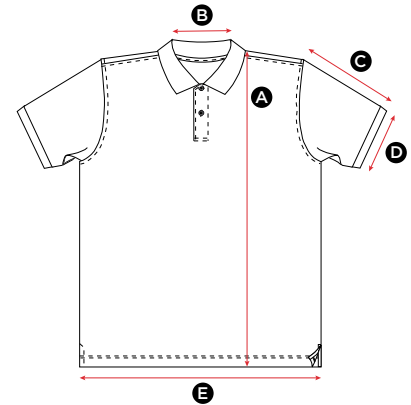
Mens Ladies Kids

SG50 Mens Cotton Polo

| GRÖßE | S | M | L | XL | XXL | XXXL |
|---------------------------------|------|------|------|------|------|------|
| A Länge | 70.5 | 73 | 75.5 | 78 | 80.5 | 83 |
| B Halsausschnitt hinten | 17 | 17.5 | 18 | 18.5 | 19 | 19.5 |
| C Ärmellänge | 23.5 | 24 | 24.5 | 25 | 25.5 | 26 |
| D Weite der Ärmelöffnung | 15 | 15.5 | 16 | 16.5 | 17 | 17.5 |
| E Bundöffnung | 50 | 53.5 | 57 | 60.5 | 64 | 67.5 |

Angaben in cm

Alle Größen liegen innerhalb der standardmäßigen Toleranzgrenzen der Branche und sind jeweils produktabhängig.

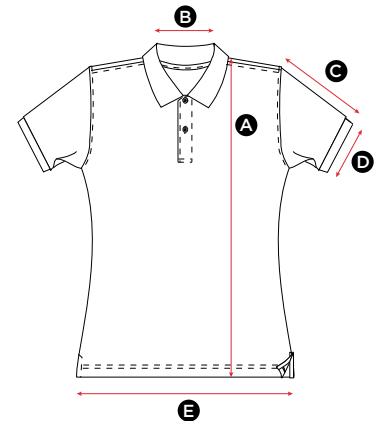


SG50F Ladies Cotton Polo

| GRÖßE | XS | S | M | L | XL | XXL |
|---------------------------------|------|------|------|------|------|------|
| A Länge | 58 | 60.5 | 63 | 65.5 | 68 | 70.5 |
| B Halsausschnitt hinten | 16.5 | 17 | 17.5 | 18 | 18.5 | 19 |
| C Ärmellänge | 15 | 16 | 17 | 18 | 19 | 20 |
| D Weite der Ärmelöffnung | 11.5 | 12.5 | 13.5 | 14.5 | 15.5 | 16.5 |
| E Bundöffnung | 45 | 48 | 51 | 54 | 57 | 60 |

Angaben in cm

Alle Größen liegen innerhalb der standardmäßigen Toleranzgrenzen der Branche und sind jeweils produktabhängig.



SG50K Kids Cotton Polo

| GRÖßE | (Years) 3-4 (CM)104 | 5-6 116 | 7-8 128 | 9-10 140 | 11-12 152 |
|---------------------------------|------------------------|------------|------------|-------------|--------------|
| A Länge | 46.5 | 49.5 | 52.5 | 58.5 | 66.5 |
| B Halsausschnitt hinten | 13 | 13 | 14 | 14 | 15 |
| C Ärmellänge | 13 | 14 | 15 | 16 | 20 |
| D Weite der Ärmelöffnung | 9 | 9.5 | 10 | 10.5 | 12 |
| E Bundöffnung | 35 | 38 | 41 | 44 | 48 |

Angaben in cm

Alle Größen liegen innerhalb der standardmäßigen Toleranzgrenzen der Branche und sind jeweils produktabhängig.

